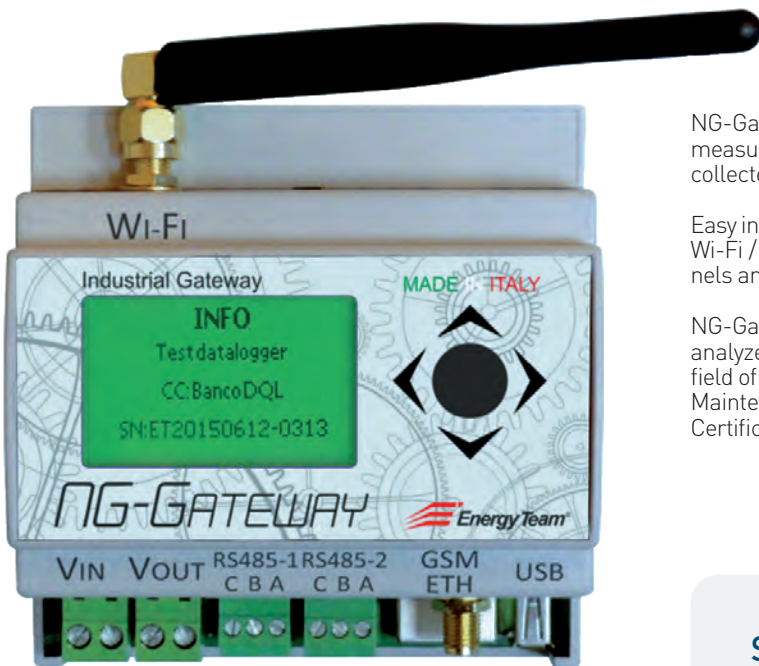


NG-Gateway

Collect, store and send data to the Server



NG-Gateway is ideal for acquiring and filing data from instruments measuring electricity, gas, water, steam, heat, ect. it then sends all the collected measurements to one or more servers for data publication.

Easy installation and configuration, together with reduced size, flexible Wi-Fi / Ethernet / GPRS connectivity, high number of managed channels and large memory, make NG-Gateway a unique product.

NG-Gateway, placed side by side with new generation Energy Team analyzers, becomes an essential tool for all users operating in the field of energy efficiency like Energy Managers, Production Managers, Maintenance Technicians, Energy Consulting firms, ESCO's, Energy Certifications (White certificates, Diagnosis, Audit, ISO 50001).

Power Supply	65 to 265 Vac or 60 to 120 Vdc
Sensors	tens of sensors and up to 1.600 measures with 2 RS485 isolated ports
Connectivity	Ethernet, with optional Wi-Fi and GPRS connection
Web server	Integrated for system configuration and data analysis <i>(optional)</i>
Wi-Fi	integrated module with detachable antenna that can be placed outside the panel
GPRS	quad band integrated module (850/900/1800/1900MHz) with detachable antenna that can be placed outside the panel
Dimensions	5 DIN modules
Internal memory	8GB storage memory to file up to 1600 channels for over 5 years' worth of data
TCP Modbus gateway	on two RS485 independent lines
LAN Wi-Fi authentication modes accepted	WPA2 - PSK - RS485 converter on two RS485 independent lines
Available options	<ul style="list-style-type: none"> - NG-Gateway-Wi-Fi (with Wi-Fi module) - NG-Gateway-GPRS (with GPRS module) - NG-Gateway-DMG (Generic Modbus Driver)
Protocols	FTP/SFTP, Modbus TCP, MQTT

System features

Extremely flexible system

The system can manage tens of sensors thanks to 2 integrated, RS485 isolated lines and Ethernet or Wi-fi connection.

High number of channels

The system can manage up to 1.600 measures, filing up to 5 years' worth of data.

Simplified management

Along with remote configuration, the display and joystick consent basic parameters' reading and local programming of the device with no need for a supporting PC.

Automatic data export

Together with a great volume of internal memory (over 5 years' worth of data), NG-Gateway manages automatic data export of all measurements, sending them to a FTP/SFTP server.

TCP slave Modbus

All instant data from the instruments can be acquired from other systems (i.e. SCADA, plc, bms) via TCP Modbus protocol.

High connectivity

The system communicates via Ethernet with GPRS and Wi-Fi optional modules.

Wide range of measurable quantities

Connect NG-Gateway to appropriate sensors via cable or wireless to acquire, manage and file any kind of physical quantity (electricity, water, gas, irradiation, temperature, ect.)

Double TCP Modbus gateway

This makes NG-Gateway work as protocol converter (TCP to RTU Modbus) thus allowing the independent use of both RS485 serials.

Double LAN-RS485 converter

This mode allows independent use of the two serials via TCP connection.

Complete solution for Collecting and Sending Energy Consumption Data for system integrators

